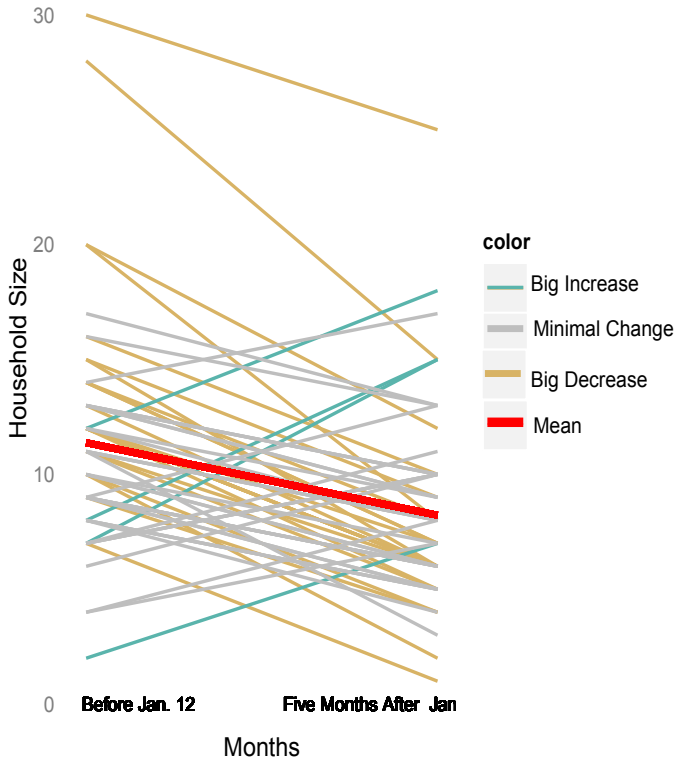


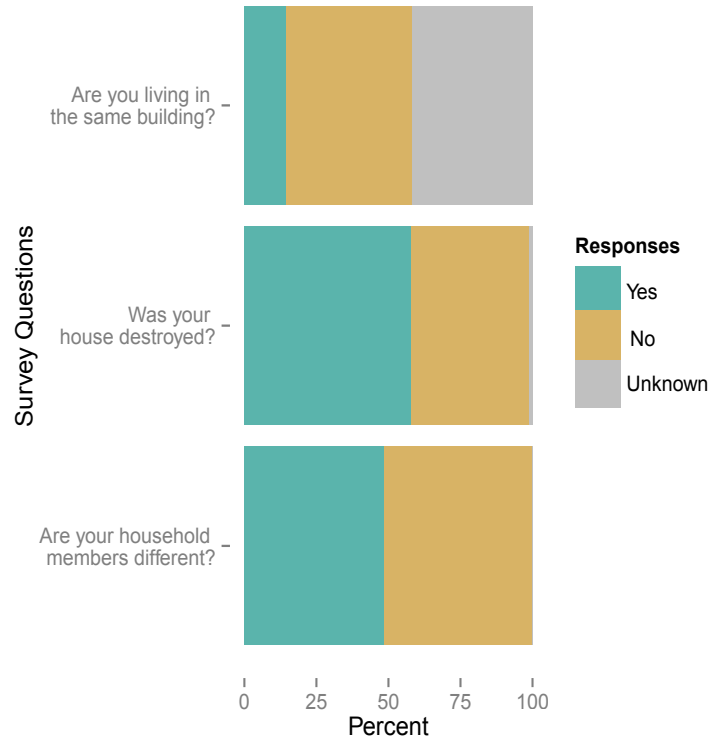
THE DRASTIC IMPACT OF THE 2010 HAITI EARTHQUAKE ON THE HOME



Change in Number of People in Household



Survey of Outcomes Post-Earthquake



Is there room for one more?

Above are households that went through major changes (gain or loss of more than 5 people) in size post-earthquake. Some households experienced tragic loss in lives (thus decreasing their size), while others combined with each other to form large cohorts (increasing the size). The line in red indicates the mean change in household size which is overall decreasing due to the loss of lives.

Home is Where The Heart Is

Although many homes were destroyed by the earthquake, many survey respondents were still reluctant to leave their place of residence. Also note that just slightly over half of the households has the same people in them both before and after the quake.

Strong Women, Lots of Kids

While many household gained children, due to the large number of orphans after the quake, households emerged with women as some of the primary household heads.

New Household Members

